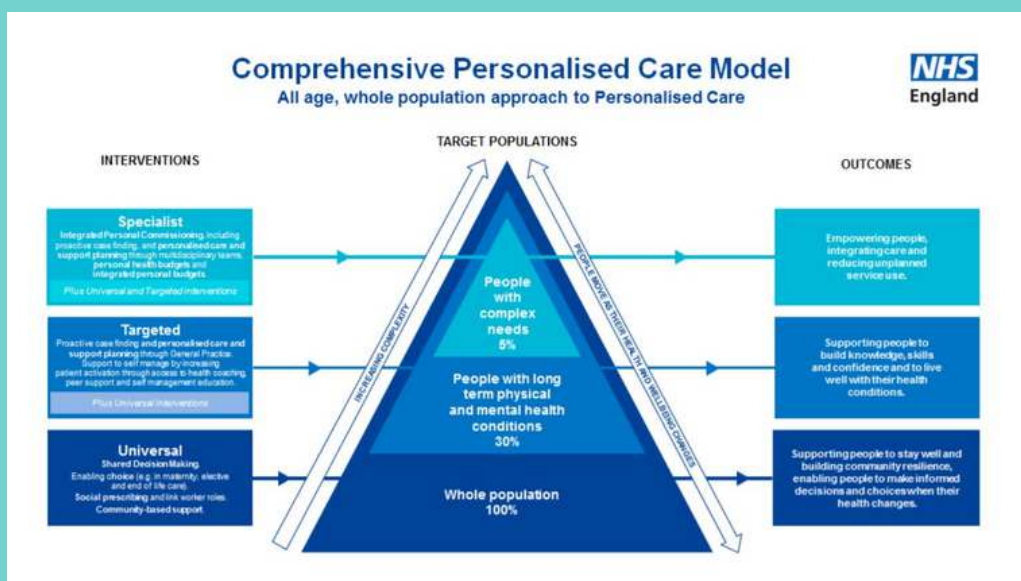


# SOCIAL PRESCRIBING MODELS

There are so many different ways to design, deliver and measure the uptake and impact of social prescribing. There are many social prescribing models emerging across the country with more set to evolve over the next few years. There is no 'one size fits all' model as patient population needs vary across regions. Here are a few active models currently making an impact to social prescribing programmes and personalised care.

## NHS England's model for personalised care



This comprehensive model of personalised care establishes: whole-population approaches to supporting people of all ages and their carers to manage their physical and mental health and wellbeing, build community resilience, and make informed decisions and choices when their health changes.

<https://www.england.nhs.uk/personalisedcare/comprehensive-model-of-personalised-care/>



## National model for social prescribing

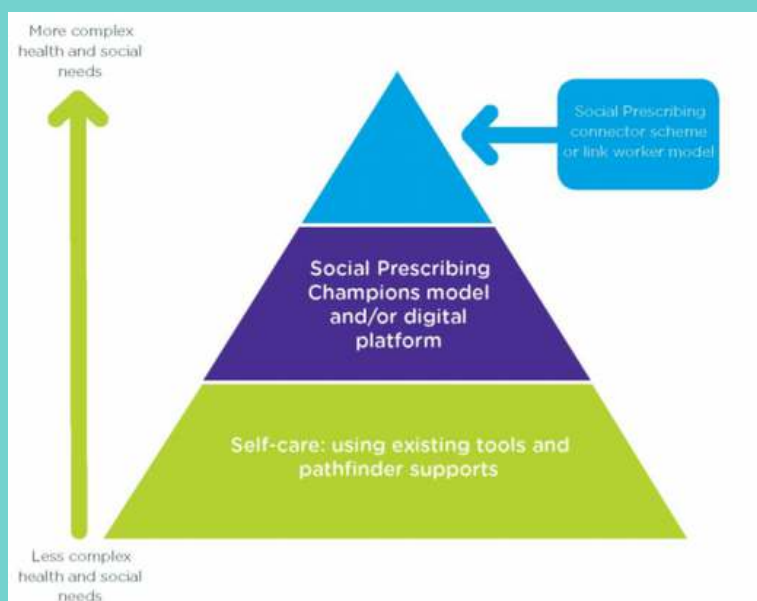
NHS England has engaged a wide range of stakeholders – including people with lived experience, GPs, social prescribing link workers, local authority commissioners, CCGs and the VCSE sector – to set out the key elements of what makes a good social prescribing scheme and what needs to be in place locally.

<https://www.england.nhs.uk/publication/social-prescribing-and-community-based-support-summary-guide/>

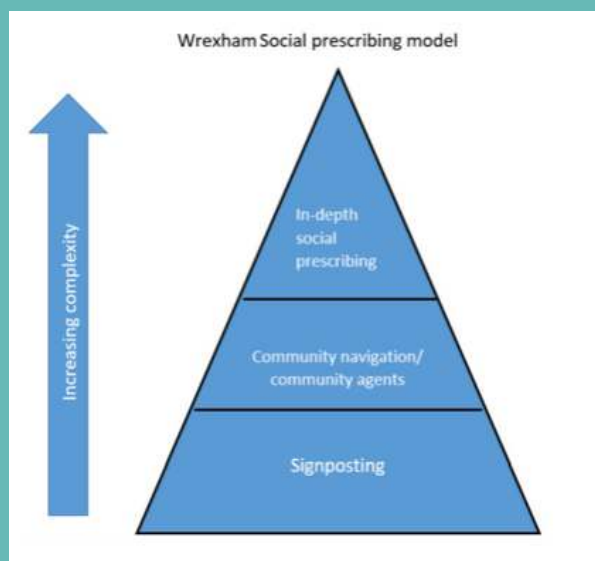
## The Champion Model

This model may help you understand if a social prescribing champions model and/or a digital platform would help improve the access and reach of social prescribing in your area. Each section of the pyramid is described in more detail below. The King's Fund expands on this model further, providing more detail and clarity at each of the levels of the pyramid.

<https://healthinnovationnetwork.com/wp-content/uploads/2018/12/Evaluation-report-design-v3.pdf>



Wrexham Social prescribing model



## Wrexham Social Prescribing Model

This 3-tier model, encompassing initial signposting, community navigation, and a service for those individuals with more complex needs who require additional support

<http://www.primarycareone.wales.nhs.uk/>